

Fast track to climate disaster

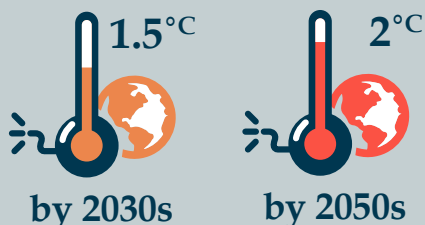
Approaching tipping points leading to cascading and irreversible impacts

We are on a fast track to **climate disaster**. Major cities under water. Unprecedented heatwaves. Terrifying storms. Widespread water shortages. The extinction of a million species of plants and animals. This is not fiction or exaggeration.

We are in the fight of our lives and we are losing ... And our planet is fast approaching **tipping points** that will make climate chaos irreversible.

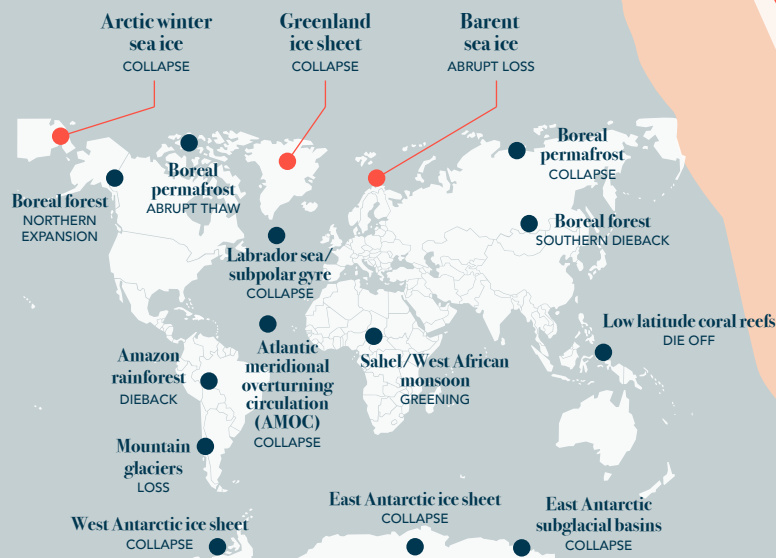
UN SECRETARY-GENERAL, ANTONIO GUTERRES

What the science says

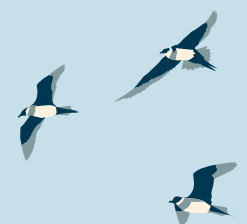


Paris Agreement global warming limits of 1.5°C and 2°C will be passed in the 2030s and 2050s if emissions don't immediately peak and rapidly decline.

Arctic climate tipping points

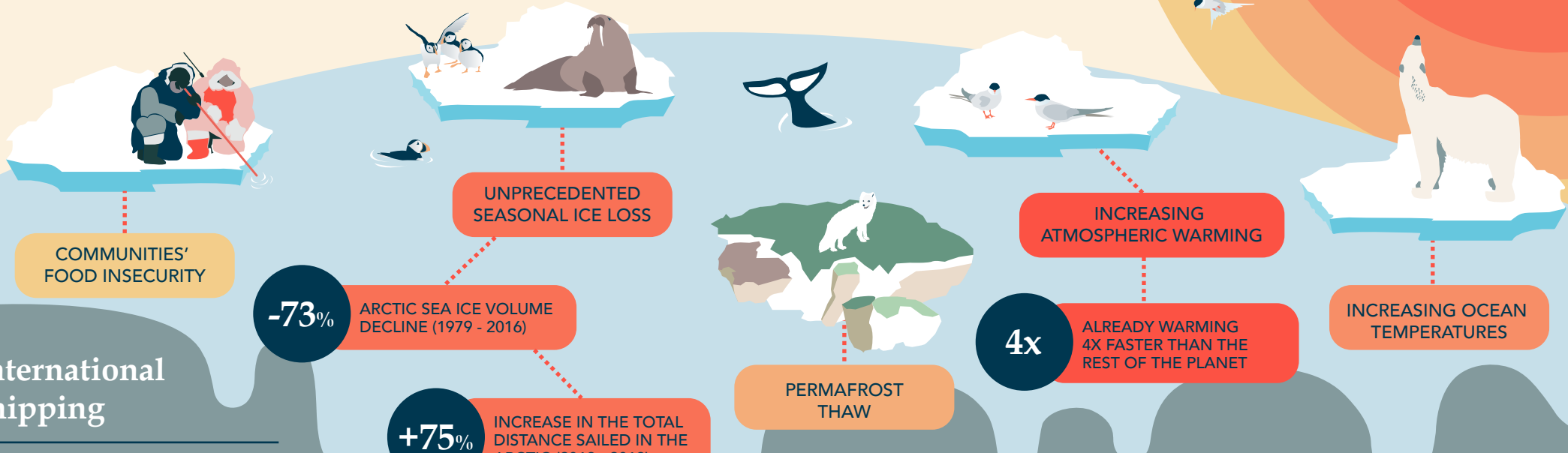


Adapted from Armstrong McKay et al. (2022)



Climate threat to the Arctic

Rapid warming and extreme temperatures causing...



-73% ARCTIC SEA ICE VOLUME DECLINE (1979 - 2016)

+75% INCREASE IN THE TOTAL DISTANCE SAILED IN THE ARCTIC (2013 - 2019)

4x ALREADY WARMING 4X FASTER THAN THE REST OF THE PLANET

International shipping

contributes significantly to the climate crisis

SOS Shipping greenhouse gas (GHG) emissions equivalent to a **large country**

SOS Black carbon (BC) emissions from shipping in the Arctic have **increased 85%** between 2015 - 2019

Action needed

Deep cuts to shipping GHG and BC emissions by 2030...

- Increasing ambition levels in the International Maritime Organization's GHG Strategy to halve climate impacts by 2030
- Maximising global shipping efficiency by reducing speed and using renewables such as wind
- Requiring ships in and near the Arctic to switch to distillate fuel
- Ships operating on distillate installing a particulate filter

